

20-20

# LIVESPEQ

Make life simpler  
with error-free  
orders

20-20 LiveSPEQ is an online product configurator that helps eliminate order errors by presenting accurate

and up-to-date options, features and pricing. By lowering per-order costs, it increases profitability.



## PROFILE

20-20 LiveSPEQ is part of 20-20 LiveSUITE, our new, fully integrated Electronic Order Processing (EOP) solution. It allows dealers from the kitchen, bath, office and closet industries to avoid order-entry errors by browsing, configuring and adding manufacturers' products to electronic orders from a graphic online catalog. For manufacturers, this means that product pricing and configuration updates are published automatically so dealers can easily place validated orders.

## THE CHALLENGE

Finding ways to eliminate order entry errors is an important business priority. Errors can occur due to outdated product pricing information, the incorrect selection of product options or from the manual input of order data. While existing electronic ordering solutions may provide product information to dealers, this information must be synchronized with the information in the Enterprise Resource Planning (ERP) system. Maintaining multiple data sets increases the cost of doing business and the likelihood of order entry errors.

## THE SOLUTION

The cost of doing business is reduced for manufacturers and dealers by eliminating costly mistakes caused by manual data entry, incorrect product configurations and out-dated pricing. With 20-20 LiveSPEQ, you provide your dealers and retailers with a quick and easy way to get instant, accurate pricing for products, along with up-to-date product information. 20-20 LiveSPEQ makes it virtually impossible for dealers or retailers to make an ordering error.

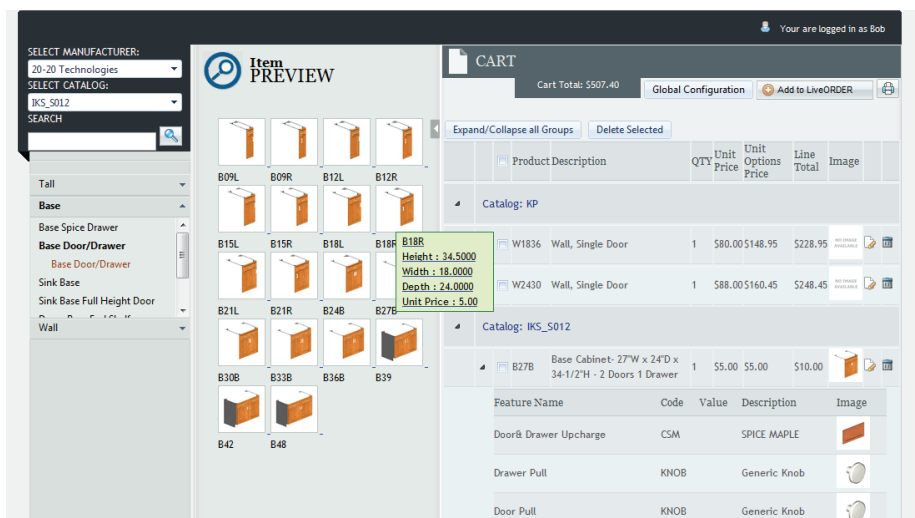
## WHAT IS 20-20 LIVESPEQ?

20-20 LiveSPEQ is an online graphical configurator that allows dealers and retailers to browse products and configure them as they like. All products are presented only with the features and options that are available as defined by the manufacturer and with the most up to date pricing. This ensures that the orders are automatically validated.



## BENEFITS

- Eliminate costly ordering errors due to error-prone manual order entry. When combined with 20-20 LiveORDER, dealers can submit their orders electronically.
- Ensure 100% order accuracy by providing updated and accurate pricing and product options. 20-20 LiveSPEQ makes it virtually impossible for a dealer or retailer to make an order error.
- In conjunction with other 20-20 LiveORDER and 20-20 LiveLINQ, you and your dealers can enjoy the benefits of an integrated and comprehensive electronic ordering process including real-time order status updates.
- Improve efficiency and reduce your order processing times. 20-20 LiveSPEQ provides your dealers and retailers with instant access to accurate price quotes for selected products.
- Improve customer satisfaction by delivering enhanced up-to-date and accurate product information.

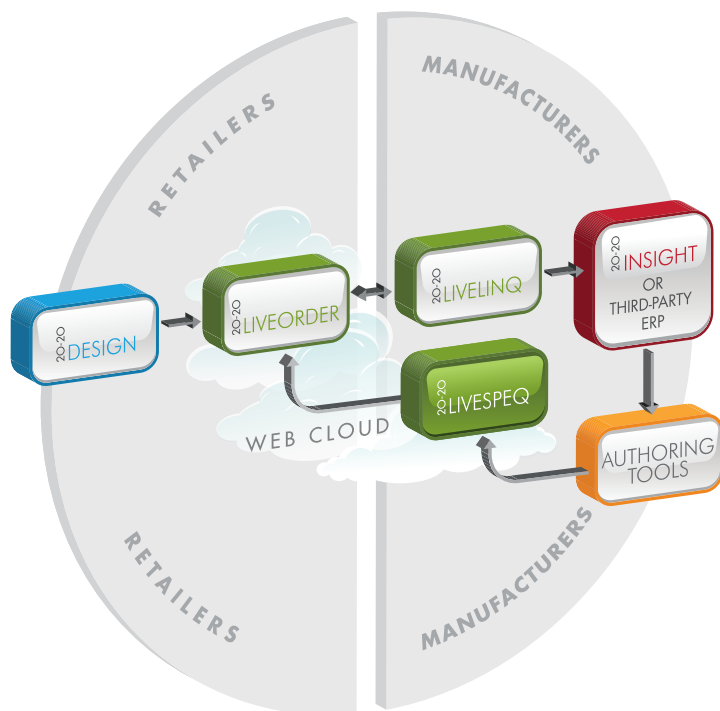


### WHY IS 20-20 LIVESPEQ DIFFERENT?

20-20 LiveSPEQ is an online configurator that presents product features, options and pricing to dealers and retailers. You can push selected product data to 20-20 LiveSPEQ from your ERP system whenever and as often as you like, thus having complete control of your product offering. What's more, you only have one data source to maintain which means lower maintenance costs.

### PRODUCT LINE

This software is part of a series of integrated applications.



### FEATURES

- Web-based solution, avoiding the need for version-specific client-side software
- Tight, secure integration with 20-20 LiveORDER for electronic ordering
- Allows you to electronically publish your product catalogs to 20-20 LiveSPEQ so dealers can easily place accurate orders
- Tight integration with 20-20's inSight ERP for easy data publishing
- Your existing ERP or back office is used as the single source for product data published to 20-20 LiveSPEQ. This eliminates the need to maintain multiple external data sets
- You have complete control of the data available in 20-20 LiveSPEQ and can publish product updates to 20-20 LiveSPEQ as often as you like
- Detailed order information for each line item, including all selected features & options and of course, accurate pricing

### SYSTEM RECOMMENDATIONS

#### Operating System:

Any commercially available OS (Microsoft Windows or Linux® preferred). Windows Server® is not required to run 20-20 LiveLINQ; the regular desktop Windows (XP, Vista, and Windows 7) can be used in a low transaction volume environment)

#### Processor:

1 GHz 32-bit (x86) or 64-bit (x64) or above

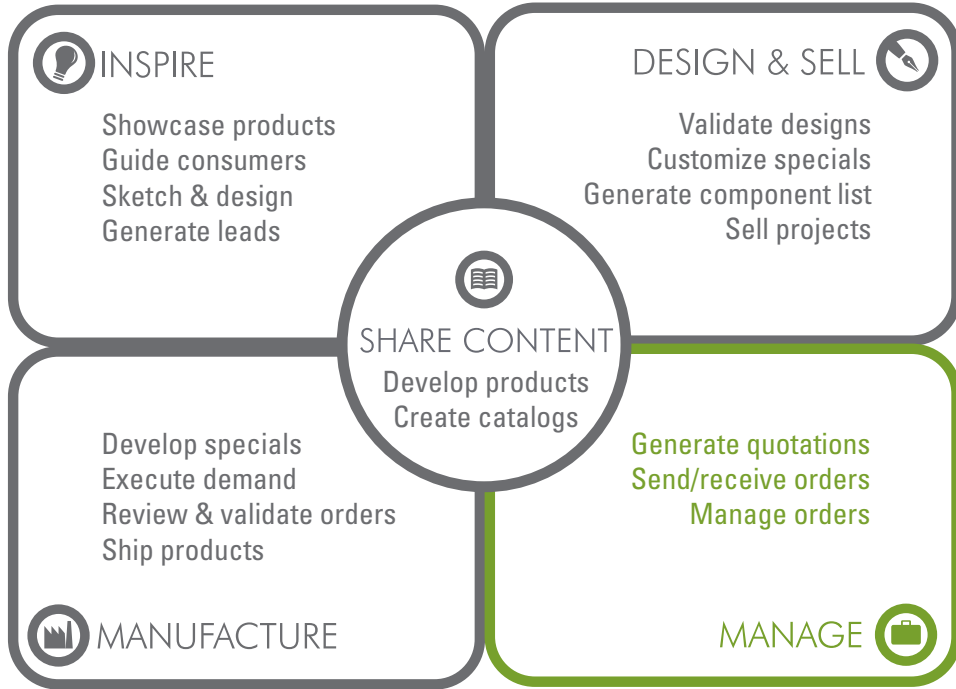
#### System memory:

2GB or more (minimum of 4GB if running 64-bit)

#### Hard Drive:

40GB or above (with 4GB or more free disk space)

Connection to the Internet with a static IP address



## PRODUCT LINES

With 20-20 Technologies' unique end-to-end suite of software, all functions of the interior design process – from inspiration to completion – can be integrated, with less duplication of effort and more productivity.



## MAKING IDEAL SPACES COME TO LIFE

INSPIRE  
 DESIGN & SELL  
 MANAGE  
 MANUFACTURE  
 SHARE CONTENT



### WORLD HEADQUARTER+ RESIDENTIAL SALES & SERVICES

20-20 Technologies Inc.  
400, Armand-Frappier Blvd. Suite 2020  
Laval (Quebec) Canada H7V 4B4

Phone: 514.332.4110  
Fax: 514.334.6043  
Sales toll free: 1.866.698.2020  
E-mail: sales@2020.net

### COMMERCIAL SALES & SERVICES

20-20 Technologies Commercial Corp.  
550, 3 Mile Road NW  
Grand Rapids, MI 49566

Phone: 616.454.0000  
Fax: 616.454.4140  
Sales toll free: 1.800.227.0038  
E-mail: commercial.sales@2020.net

[www.2020technologies.com](http://www.2020technologies.com)