

# ENTERPRISE INSIGHT



## ↘ CNC Machine Integration

The GenPost post-processor automatically creates machine-specific programs for CNC routers, point-to-points, and machining centers. Geometry files such as DXF, NCL, and FXM provide machining input for GenPost. CNC programs can be printed on barcode labels to support dynamic scanning during production.

## FEATURES

### Embedded panel optimization

- inSight supports integration with all panel saw optimization packages with a special emphasis on Cut Planner and ARDIS.

### True shape nesting solution

- Enterprise solution supporting multiple CNC nesting machines
- Spacing between parts is dependent on actual tools in use, not default values for parts
- Advanced functions such as Onion Skinning and Common Line Cutting

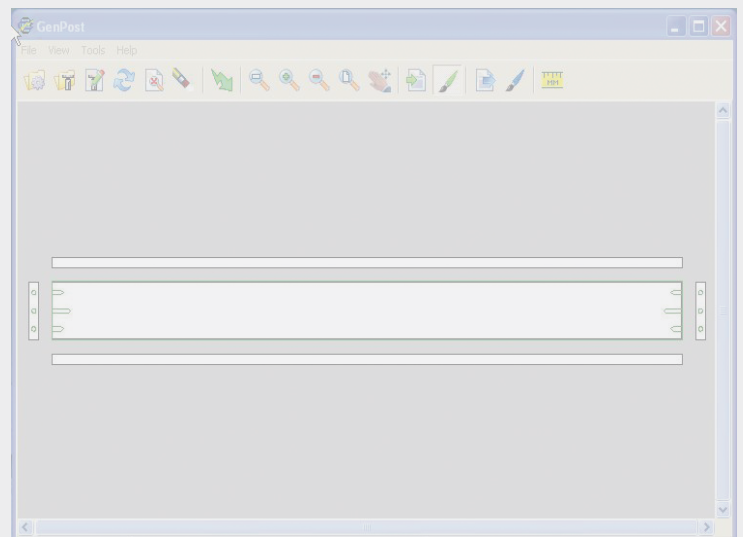
### Support for new and vintage machines

- Flexible output, configurable for virtually any format
- Broad range of support based on 20-20's long-term familiarity and experience with older machines
- New technology that often allows communication with older machines, even on proprietary controllers

## BENEFITS

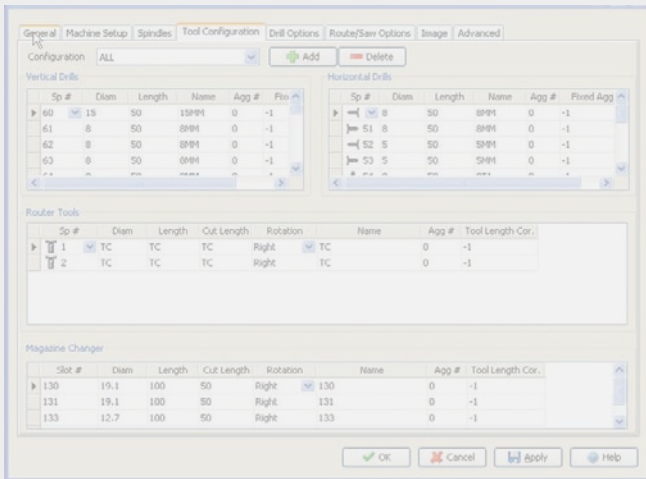
- Dynamic creation of CNC programs
- Support for mixed manufacturing between nesting and panel saw
- Human-machine interfaces
- Multiple geometry input formats such as DXF, NCL, and FXM

## GENPOST DESIGN INTERFACE



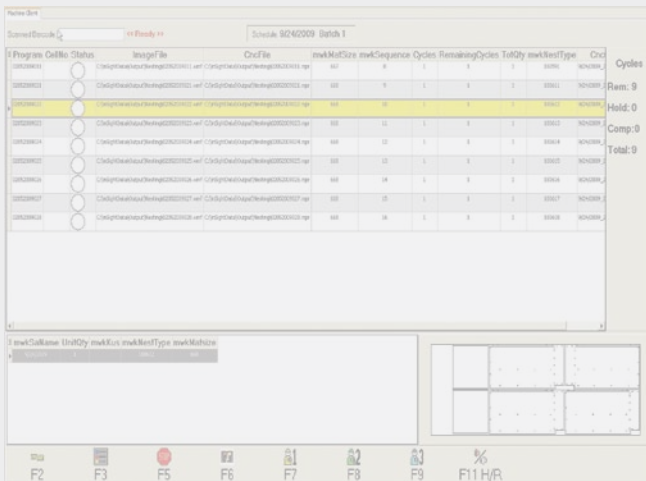
The GenPost main interface displays the part as it will be oriented on the machine table. It also provides an exploded view of the part to show machining on the edges.

## GENPOST MACHINE SPECIFICATION INTERFACE



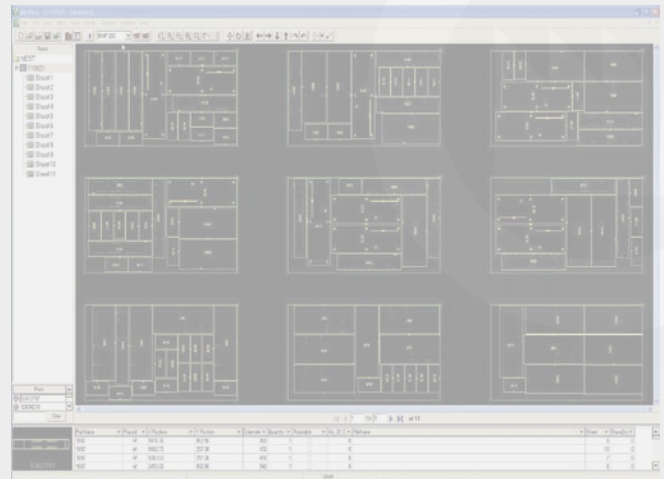
Machine configuration is handled through setup tabs, such as Tool Configuration, where it is possible to define the exact tools installed on the machine. Machine configuration is machine-specific, allowing support for an infinite number of unique machines and layouts.

## INSIGHT MACHINE CLIENT INTERFACE



Machine Client screen, which allows automated CNC machine scheduling. Communication directly between inSight and the machine controller allows completely automated task scheduling and control, with real-time status reporting back to inSight.

## ABC NEST RESULTS SCREEN



ABCNest, our True Shape Nesting solution, is capable of handling jobs from small orders of only a few parts, to enterprise-level quantities involving thousands of parts and unique materials. It also supports multiple CNC machine output so that the same nest can be posted to all machines. This flexibility allows the plant to quickly adapt when it becomes necessary to move production to another machine.

## SYSTEM RECOMMENDATIONS ENTERPRISE INSIGHT V4.5

### DATABASE SERVER

Microsoft SQL Server 2008  
Windows 2003/2008 Server

### CLIENT WORKSTATION (MINIMUM REQUIREMENTS)

Windows XP Pro or Windows Vista  
Intel Pentium 4 Processor  
1 GB of RAM  
36 GB free disk space  
Windows XP Pro Compatible Video Card  
100 MB/sec Network connection

## WORLD HEADQUARTERS + ENTERPRISE SALES & SERVICES

20-20 Technologies Inc.  
400 Armand-Frappier Blvd, Suite 2020  
Laval, Quebec H7V 4B4 Canada  
Phone: 514.332.4110  
Fax: 514.334.6043  
Sales Toll Free: 1.866.698.2020  
Quebec Toll Free: 1.888.504.2020

20-20 Technologies Inc.  
Commercial Corp.  
1255 Crescent Green Drive, Suite 410  
Cary, NC 27518  
Phone: 919.319.0888  
Fax: 919.319.0884  
Sales Toll Free: 1.800.225.7804

E-mail: [enter.sales@2020.net](mailto:enter.sales@2020.net)  
[www.2020Technologies.com](http://www.2020Technologies.com)

© 2010 by 20-20 Technologies Inc. All rights reserved. The names 20-20 Technologies, 20-20, 20-20 Design, 2020.net, 20-20 Virtual Systems, 20-20 Virtual Showroom, 20-20 Virtual Planner are registered, pending or common law trademark of 20-20 Technologies Inc. and/or any of its subsidiaries. All reference to other brands and products appearing herein are trademarks of their respective holder(s). 20-20 Technologies Inc. reserves the right to alter specifications and other product information without prior notice. The software and information contained herein are subject to the terms and conditions of the License Agreement included with the media.