

ENTERPRISE INSIGHT



↘ Data Integration

From its inception, Enterprise inSight was developed to integrate with external systems and to augment key functions that are not supported by typical ERP systems. The system provides well-defined and flexible interfaces with engineering configurators, sales configurators, financial systems, and other third-party systems such as IMOS, 20-20 Design, 20-20 Giza, ShopWare CAD, ShopWare Product Planner, MS Dynamics AX and GP, optimizers, and external CAM systems.

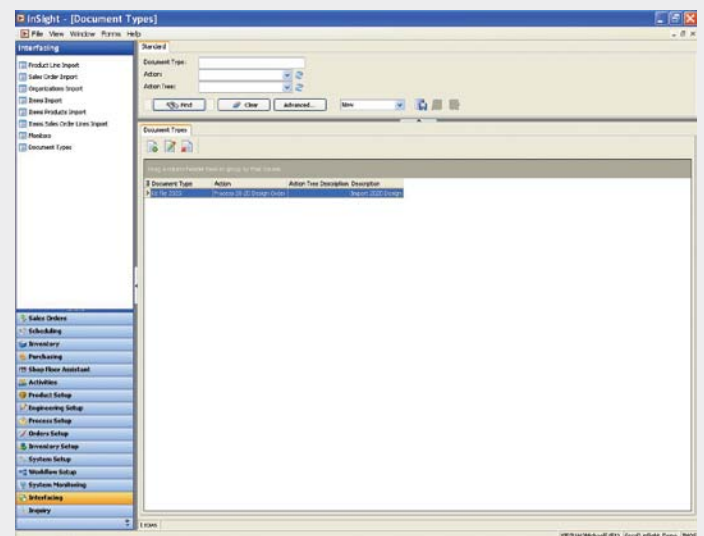
FEATURES

- Integration functions support the import of sales orders, customers, vendors, items, bills of material, and system data.
- XML and Excel order import and export capabilities support multi-site and multi-company environments.
- Microsoft partnership enables tight integration with MS Dynamics AX and GP.
- Dynamic monitoring of email, file system, and MS Message Queue.

BENEFITS

- Modular design facilitates integration with various systems and support of key functions.
- Interfacing tables designed to easily export and import using various file formats.
- InResponse is the service engine that automates and monitors all import and export activities.

INTERFACING



The inSight integration tables allow seamless exporting and importing of most all relevant sales and product data. Using the inResponse service engine the data is processed, validated and imported.

- Key interfaces with MS Dynamics GP and AX fulfill all enterprise financial requirements and enhance ERP functionality.

XLS

Product Code	Date	Product Name	Quantity	Price	Total
100000	2009-01-01	100000	1000	1000.00	1000.00
100001	2009-01-01	100001	2000	2000.00	2000.00
100002	2009-01-01	100002	3000	3000.00	3000.00
100003	2009-01-01	100003	4000	4000.00	4000.00
100004	2009-01-01	100004	5000	5000.00	5000.00

XML

```

<?xml version="1.0" encoding="UTF-8" standalone="yes" ?>
<ProductCode>100000</ProductCode>
<Date>2009-01-01</Date>
<ProductName>100000</ProductName>
<Quantity>1000</Quantity>
<Price>1000.00</Price>
<Total>1000.00</Total>
  
```

Interfaces can import product and sales data from XLS files.

Enterprise inSight supports the import and export of sales and product data through XML. 20-20 has developed several kitchen and office standards for the transmission of sales data from 20-20 Worksheet and 20-20 Design.

SYSTEM RECOMMENDATIONS ENTERPRISE INSIGHT V4.5

DATABASE SERVER

Microsoft SQL Server 2008
Windows 2003/2008 Server

CLIENT WORKSTATION (MINIMUM REQUIREMENTS)

- Windows XP Pro or Windows Vista
- Intel Pentium 4 Processor
- 1 GB RAM
- 36 GB free disk space
- Windows XP Pro Compatible Video Card
- 100 MB/sec Network connection

WORLD HEADQUARTERS + ENTERPRISE SALES & SERVICES

20-20 Technologies Inc.
400 Armand-Frappier Blvd, Suite 2020
Laval, Quebec H7V 4B4 Canada
Phone: 514.332.4110
Fax: 514.334.6043
Sales Toll Free: 1.866.698.2020
Quebec Toll Free: 1.888.504.2020

20-20 Technologies Inc.
Commercial Corp.
1255 Crescent Green Drive, Suite 410
Cary, NC 27518
Phone: 919.319.0888
Fax: 919.319.0884
Sales Toll Free: 1.800.225.7804

E-mail: enter.sales@2020.net
www.2020Technologies.com

© 2010 by 20-20 Technologies Inc. All rights reserved. The names 20-20 Technologies, 20-20, 20-20 Design, 2020.net, 20-20 Virtual Systems, 20-20 Virtual Showroom, 20-20 Virtual Planner are registered, pending or common law trademark of 20-20 Technologies Inc. and/or any of its subsidiaries. All reference to other brands and products appearing herein are trademarks of their respective holder(s). 20-20 Technologies Inc. reserves the right to alter specifications and other product information without prior notice. The software and information contained herein are subject to the terms and conditions of the License Agreement included with the media.